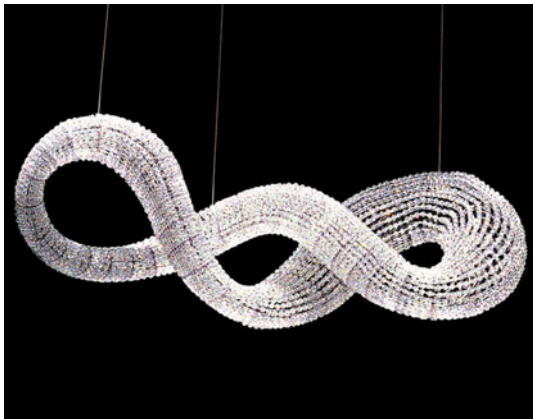


SWAROVSKI CRYSTAL PALACE

Mini Voyage 2005

Yves Béhar

Mini Voyage is a scaled down version of the original chandelier conceived by Yves Behar for Swarovski Crystal Palace. The original was a 4.5m structure installed at New York's JFK airport as an allegory to the continuous movement that travel represents. Mini Voyage retains the design qualities of the original but is approximately 2m in length and contains 10,000 Swarovski crystals, lit internally with white LEDs.



Weight

120kg / 265lbs

Lamping

White LEDs 240V (EU)

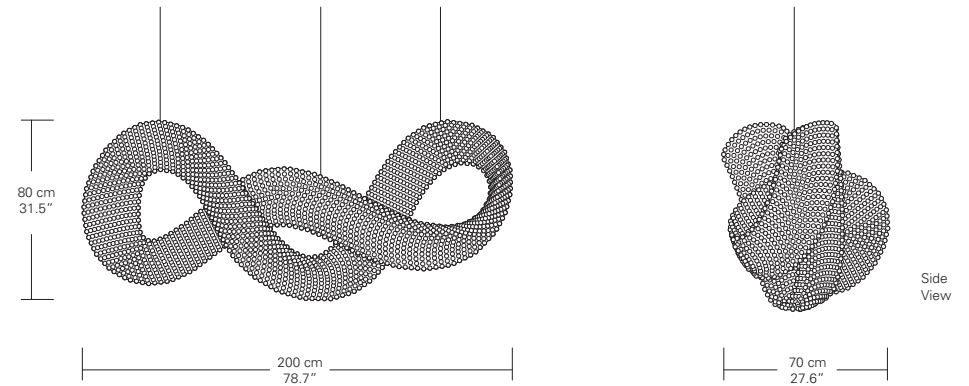
White LEDs 110V (US)

Colors

Crystal

Model Number

CPVE200



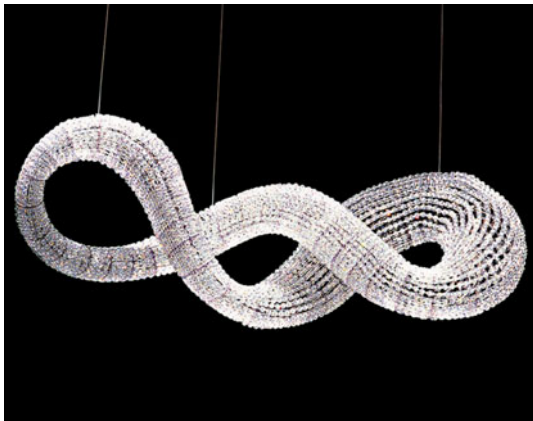
SWAROVSKI CRYSTAL PALACE

Mini Voyage 2005

Yves Béhar

Non-illuminated

Mini Voyage is a scaled down version of the original chandelier conceived by Yves Behar for Swarovski Crystal Palace. The original was a 4.5m structure installed at New York's JFK airport as an allegory to the continuous movement that travel represents. Mini Voyage retains the design qualities of the original but is approximately 2m in length and contains 10,000 Swarovski crystals, lit internally with white LEDs.



Weight

Colors

Model Number

120kg / 265lbs

Crystal

CPVN200

